

Precision Start management application

Advanced management for the range of Exbander Precision devices

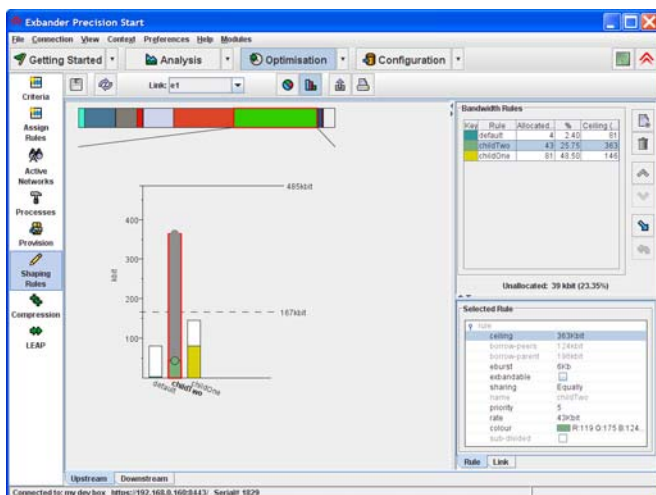
DBAM's Precision Start User Interface is a powerful software application that allows IT administrators to easily access the functionality and features of each EP device and thereby:

- Monitor all IP Flow Activity;
- Create detailed and summary network activity reports;
- Configure Traffic Shaping;
- Configure Load Balancing;
- Configure Routing;
- Configure WAN Acceleration;
- Access and apply all product upgrades.



Precision Start is supplied with every delivered DBAM EP device. Precision Start is a Java Web Start application. Delivered using Java technology, Precision Start operates on all modern operating systems and offers today's most advanced powerful, flexible traffic shaping, network monitoring and system configuration tool available anywhere.

Precision Start offers a new experience for busy IT Administrators, Network Managers and IT Consultants. With Precision Start, the behaviour of the LAN/WAN connection can be monitored and altered to suit the business's critical requirements by the click on the mouse. Precision Start is a tool that offers remarkable benefits to its users, including the ability to easily:



- Identify all LAN/WAN Traffic;
- Prioritise and allocate bandwidth for business use;
- Relegate or block non business use;
- Prevent valuable bandwidth from being misused;
- Ensure that mission critical applications run efficiently.

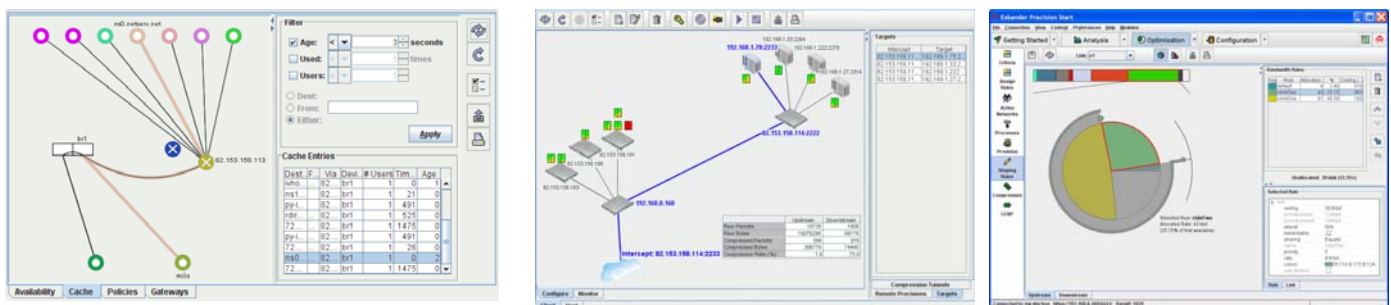
Once the non business traffic has been eliminated and all business traffic has been correctly prioritised, you may create reports to record your improvement in the way that the LAN/WAN link is now being used in your business, or if you are a consultant, in your client's business. Precision Start is the tool that allows you to show how you have maximised the return on investment.

Designed as an intuitive graphical interface, Precision Start uniquely decouples upgrade procedures for management software from the firmware on board the appliance, eliminating any possible risk of firmware corruption from the more frequent management software updates.

Benefits delivered by Precision Start:

- Processing of management information does not divert resource from the core functions of the appliance;
- Historical management data are not limited by the capacity of the appliance's hard disk;
- Users do not have to be on-line to view and manipulate management information;
- Users do not have to occupy network connections to support the management application; and
- Network management application performance is not slowed by virtue of network latency between the Graphical User Interface and the data.

Precision Start provides the information needed to easily and successfully manage single and multiple site installations - the connected EP devices report on every aspect of network utilisation across all 7 layers of the OSI model, enabling precise configuration to accurately reflect the business needs of your organisation.



EP Module	Notes
Tasks	Introduces the user to the Application and enables easy navigation through the device's functionality;
Ratewatcher	Allows the administrator to view the bulk consumption of network resources on a rate/speed basis;
Active Flows	Allows administrators to view all current traffic is currently active on the network;
Active Networks	Enables administrators to assign Microsoft AD users, groups and machines to different bandwidth settings;
Rules	Segments the current bandwidth into distinct categories;
Criteria	Enables administrators to setup packet classification criteria for bandwidth rule eligibility;
Inspector7	Performs application layer inspection of traffic passing through the device (control and monitoring);
Statistics	Provides administrators with historical views of activity on the network;
Processes	Enables administrator to set different actions to be performed on traffic passing through the device;
Notifier	Informs administrators of different events on the network;
Compression	Allows administrators to view, setup and control stream based compressed tunnels;
Acceleration	Enables administrators to set-up, control and view WAN Acceleration between EP devices;
Reports	Creates HTML or pdf reports based on traffic between predefined periods;
WAND	Wide Area Networks Display Enables administrators to drill down into monitored data from the EP device(s) and to create and schedule reports in HTML and pdf formats on the analysed data;
Precision Config	A tool that enables configuration of the EP devices(s)'s ports and bridges;
Routing	Provides views of the routing cache and the availability of particular destinations; enables routes to be specified and load balancing and failover to be configured;
DB Admin	Administers and manages the database of statistics that are used for WAND Reports. This also administers different data bases such as SQL server and MySQL.

System requirements:

Precision Start requires the user to have the Java runtime environment on their Laptop or PC. Java can be downloaded from <http://java.com>. The Precision Start application will, itself, automatically download and install any available updates.