

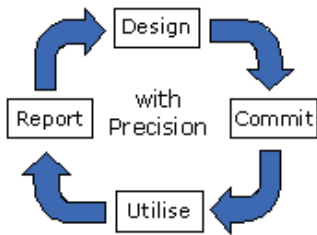
Exbander Precision EP60000

Consolidated network traffic optimisation, reporting and management solution for enterprises.



In a converging world the LAN/WAN link is an increasingly vital business enabler. More than ever enterprises need to derive flexibility and consistency from the performance of their network asset. Exbander is the tool that delivers the network performance to match the need - today and in the future. Exbander provides control of the link traffic ensuring that any business is able to regulate the way applications, users and devices utilise its network infrastructure.

The potential and the value of the asset are realised when the business designs and then commits valuable network resources to applications and users that are mission critical. Exbander monitors, controls and reports how bandwidth is used – ensuring that the LAN/WAN utilisation is designed to fit the requirements of the business.



Bandwidth is directed and network resources are delivered to business critical events and devices.

Business operations are protected from the impact of random network events.

Enterprise efficiency is increased by guaranteeing fast resource access.

“ We have selected the Exbander Precision EP60000 as a primary investigative tool for fraud detection and anomaly detection on our SIP and H.323 VoIP systems. ”

Norbet Spekling UGC

Design

Exbander identifies all traffic flows traversing the link. The observation process, via the flow viewer feature, allows IT personnel to make decisions about the traffic’s importance and with this information, Exbander enables traffic flows to be designed and defined to suit the exact needs of the business. Exbander’s unique bandwidth design capability ensures that the performance of the physical infrastructure is maximised by creating rules for all traffic flows.

Commit

Rules for each flow can be easily created committing the bandwidth resource specifically to suit the flow’s relevance to the business. The flow can be a single stream, or one or more groups of streams defined by application type, user type or other criteria. Exbander allows business critical traffic to be configured to receive its bandwidth as and when it is needed, and ensures that the non-critical traffic receives its bandwidth when capacity on the link is available. Designed and committed bandwidth enforces the policies ensuring that the resource is used to deliver its intended function at all times.

Utilise

The link utilisation is maximised because the network resources are always delivered to their target. Random network events are managed so that they do not impact the committed traffic. Link resources that have been designed for specific traffic, such as VoIP or Citrix, are only affected in the way that they are designed to be. If the configured resources are not being utilised concurrently, they can be “borrowed” by other traffic so that resources are not wasted. Exbander’s control ensures the best utilisation of the network for the business.

Report

Exbander’s comprehensive monitoring and statistics recording feature provides a powerful and flexible basis for monitoring and reporting the network’s performance. Exbander can be installed initially as a monitoring device, allowing the reported traffic data to be used to design and configure the flows to bring order to the business network.

Expander EP60000 - features

Active Flows

The Active Flows screen enables snapshot views of the flows to be taken. This feature provides detailed views about the construction and nature of each flow traversing the network link.

Further information is shown for the packet count and total bytes for individual flows as well as statistics for the flows. Data regarding the flows according to rules, MAC address, IP address, ports and Layer7 application are shown in tabular, pie-chart and bar chart formats.

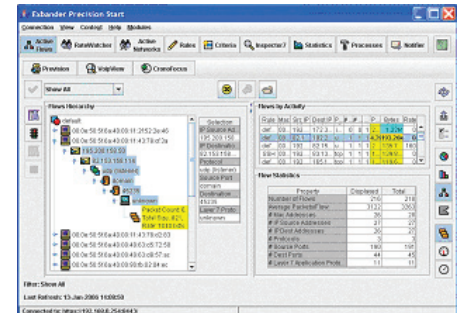


Diagram 1 - Active Flow

Rules

The Rules Interfaces enable the creation and management of the rules that will be used to control the traffic flows. Interfaces include:

- Pie chart interface allowing bandwidth allocation segments to be easily and quickly created.
- Tabular views summarising the rules.

Rules can be created, edited and deleted in each of the views. The Pie chart graphical views show the allocated rates for each rule as filled segments, with relative proportions reflecting the relative rates of the rules. Policy setup is achieved in real time by clicking on the segment(s) and stretching each to the required level.

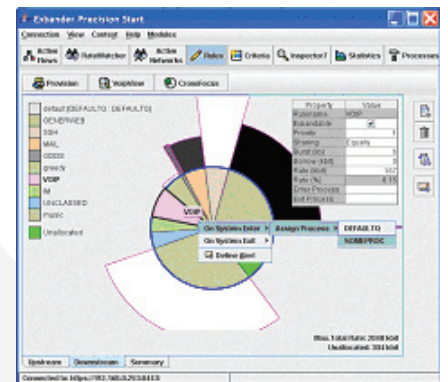


Diagram 1 - Rules

The Rate Watcher

The Rate Watcher allows views of the flow rates for each rule compared with the committed rate.

The Rate Tracker also provides monitoring of the rate of flows, governed by a particular rule as it varies over time.

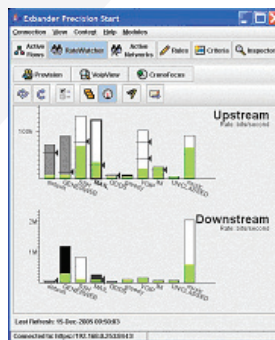


Diagram 1 - Rate Watcher

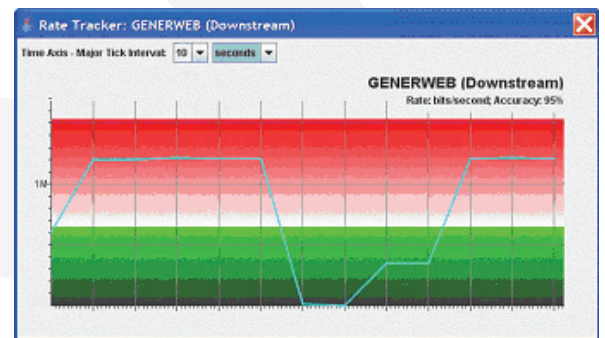


Diagram 2 - Rate Watcher

Inspector 7

Inspector7 enables the network traffic flows to be monitored, with classification by the related Layer 7 application. Inspector7 gives full control over which applications to monitor. Application related flows can be assigned to a particular rule or the traffic flow to that application can be blocked entirely.

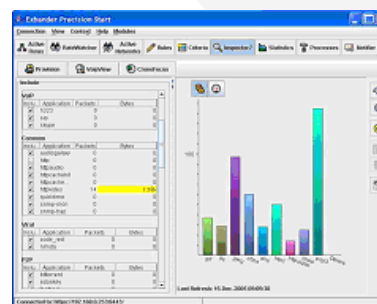


Diagram 1 - Inspector 7

Expander provides Traffic shaping, Routing and Load Balancing and WAN Acceleration solutions for single and multiple site installations.

Product Sheet
Specification – EP60000

CORE MODULE	DESCRIPTION
WAN Capacity - Total Throughput (in & out)	155Mb/s (option to 1Gb/s)
Profile	2U
Optimised TCP Connections	10,000
IP Flows	700,000
Shaping Policies	8,192
Bandwidth Management	Yes
Compression	Yes
Data Reduction	Yes
Acceleration	TCP & CIFS
QoS	Yes
Failover	Yes
Load Balancing	Yes
Routing	Yes
Analysis & Reporting	Yes
Data Store Capacity	80GB
LCD & keypad	Yes
Precision Start Configuration & Management Suite	Yes
PHYSICAL SPECIFICATIONS	
Power	460w + 460w redundancy
VA	Dual 110-240v AC
Temperature	5 - 40°c (67-113°F)
Relative Humidity	20% to 90% RH
System Dimensions	44.3cm (W) x 51.8cm (D) x 8.8cm (H)
Packaging Dimensions	60cm(W) x 68cm (D) x 29cm (H)
Gross Weight	18.5kg (40.75 lbs)

Ordering Information - EP60000 Devices & Licences

PRODUCT NAME	DESCRIPTION	PARTCODE	RRP
EP60000 Chassis	EP60000 Chassis including 155Mb/s Throughput License (Software License Sold Separately)	EP60000	£24,999.00
Unless opting for a Silver or Gold Support Package, you must add a Software License to your EP60000 order:			
Software License EP60000	Basic 12 month Software License for EP60000 (If a Silver or Gold Support Package is purchased, this is not required)	EP60000SL	£1,250.00
Choose to upgrade from the 155Mb/s Throughput License included as standard by adding the option below:			
Throughput License(1GB)	Upgrade to 1Gb/s Throughput License for EP60000	GIGAbWALIC	£14,999.00
Choose a support package if required from the options below:			
Silver Support EP60000(155)	12 month Silver Support Package for EP60000 with 155Mb/s Throughput Including FREE 12 month Software License	SISUP-155-0000	£6,250.00
Silver Support EP60000(1GB)	12 month Silver Support Package for EP60000 with 1Gb/s Throughput Including FREE 12 month Software License	SISUP-1000-0000	£9,995.00
Gold Support EP60000(155)	12 month Gold Support Package for EP60000 with 155Mb/s Throughput Including FREE 12 month Software License	GOSUP-155-0000	£7,995.00
Gold Support EP60000(1GB)	12 month Gold Support Package for EP60000 with 1Gb/s Throughput Including FREE 12 month Software License	GOSUP-1000-0000	£11,995.00
Choose to extend the Hardware Warranty from 12 Months to 36 Months by adding the option below to your EP60000 order:			
Extended Warranty EP60000	Hardware Warranty Extension for EP60000 from 12 to 36 Months	EXTWARREP60000	£7,999.00

Ordering Information - Software Modules

PRODUCT NAME	DESCRIPTION	PARTCODE	RRP
IMView	IMView Software Module for the EP60000	IMV60000	£1,500.00
VoIPView	VoIPView Software Module for the EP60000	VOV60000	£8,500.00
MPLS Control Module	MPLS Control Module for the EP60000 NEW	MPLS60000	£3,999.00
Loss Mitigation	Loss Mitigation Module for the EP60000 NEW	LOMIT60000	£18,000.00
WFS	Windows File Sharing Acceleration Module NEW	WFS60000	£9,999.00

Ordering Information - Redundant Units

PRODUCT NAME	DESCRIPTION	PARTCODE	RRP
EP60000(G)	EP60000(G) Redundant Unit	SBEP60000	£29,999.00